



Supporting the Framework for Children to Thrive in Small Population Counties

*Informational Presentation to the
First 5 State Commission
October 22, 2020*

FIRST  **5**
ASSOCIATION OF CALIFORNIA

Overview

1. History and Purpose of Small Population County Funding Augmentation

Nina Machado, First 5 Amador

2. Snapshot of Small Population County Context

Carla Ritz, First 5 Lake

3. Small Population County First 5's: Backbone and Connector

Karen Pautz, First 5 Siskiyou

4. Vibrant Small Population County First 5's: Key to Impactful First 5 Network

Kim Belshé, First 5 Los Angeles

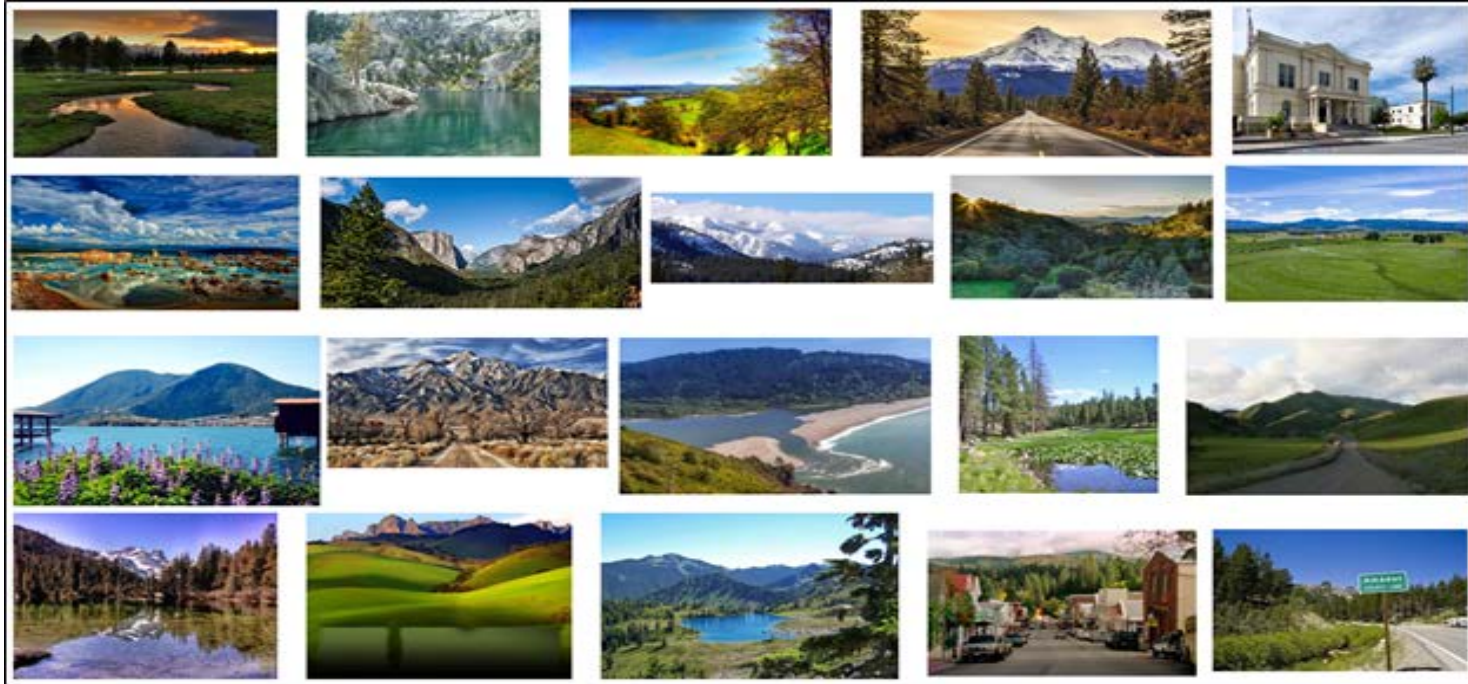
History and Purpose of Small Population County Funding Augmentation (SPCFA)

- SPCFA core to meeting Prop 10 intent and requirements
 - All First 5s, small and large, have similar core fixed costs
- Recognition of Prop 10 structural flaws to ensure young children in small population counties have increased opportunities to thrive
- Long history of First 5 California, small population counties and First 5 Association working together to ensure a strong and trusted F5 community presence
- SPCFA allows a level of baseline funding for SPC F5s to play the critical roles of conveners, connectors, systems change agents, and service providers
- Brings the 0-5 voice to the table grounded in the needs of local communities

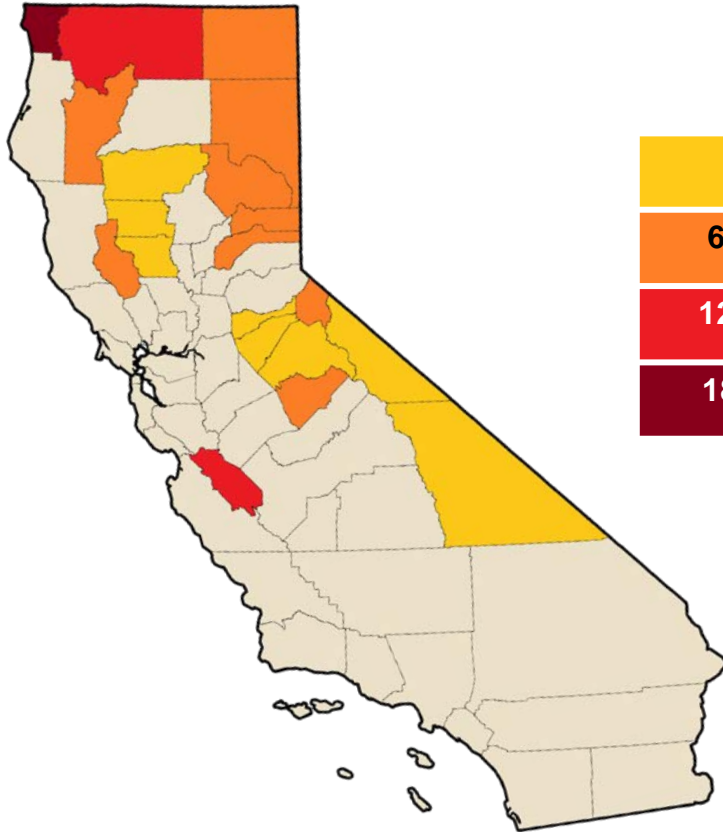
Small Population County Context: Overview

- Geography
- Demographics
- Health and Wellness Indicators
- 0-5 Investment Critical

The Beauty of California's Small Population Counties



Geography of Small Population Counties



0 – 60

Travel time to nearest small population county office

61 – 120

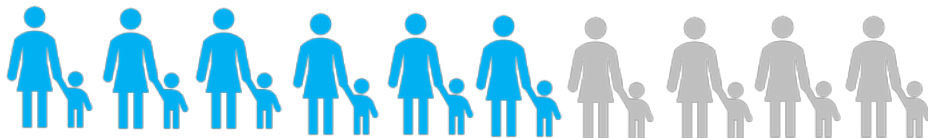
121 – 180

Range 19–200 minutes under ideal conditions

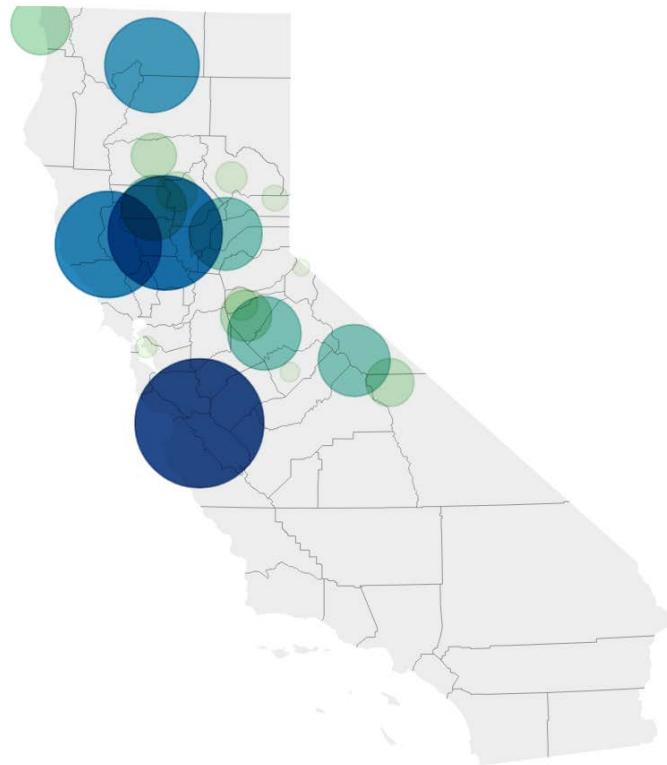
181 - 240

Children Served

- Statewide, small population counties served over **24,000 children** age 0-5 in 2018-19
- SPCFA reaches about **6 out of 10 children** age 0-5 living in small population counties, through 1 or more programs



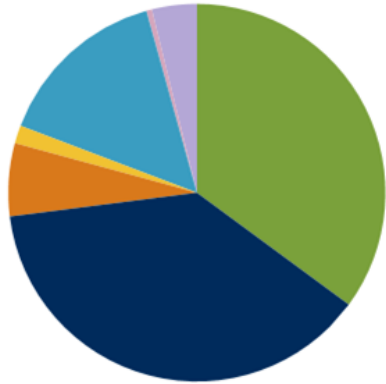
Number of Children Age 0-5 Served in 2018-19



*Counts calculated using SPCFA duplication factor calculation of duplicated counts

Unique Demographics of Small Population Counties: Key to Reaching Underserved Children 0-5 Statewide

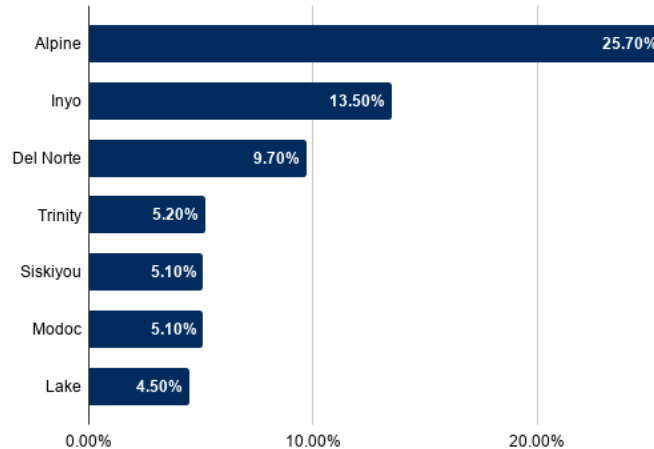
California's population by race & origin, 2019



● White ● Hispanic or Latino ● Black or African American
● American Indian and Alaska Native ● Asian ● Native Hawaiian or Pacific Islander
● Two or more races

Source: US Census Bureau, <https://www.census.gov/quickfacts/>

While California's Native American population is just 1.9%, **18 of our of 20 SPCs** have a higher population of Native Americans than the state average.



7 of the top 10 counties with the highest percentage of Native Americans are SPCs.

Concerning Low Rankings for Health and Wellness

- According to the 2020 County Health Rankings produced by the Robert Wood Johnson Foundation the five counties at the bottom of the rankings in California are Small Population Counties: Plumas, Modoc, Trinity, Siskiyou and Lake. **No SPCs are in the top 15.**
- 8 of the 10 Counties in CA where 10% or more of the population has limited access to healthy foods are SPCs.
- The California state average ratio of population to primary care physicians is 1,260:1. Seven of the bottom 10 counties for this ratio are SPCs, including Glenn County (5,620:1), Trinity (4,240:1), and San Benito (3,170:1).

Many Children in SPCs Experience Multiple Adverse Childhood Experiences

2+ Adverse Childhood Experiences

(Parent Reported, 2016-2018)

14.8%

California

24.8%

Lake, Mendocino

23.4%

Alpine, Amador, Calaveras,
Inyo, Mariposa, Mono, Tuolumne

25.8%

Del Norte, Lassen, Modoc,
Plumas, Siskiyou

22%

Colusa, Glenn, Tehama, Trinity

20.7%

Nevada, Sierra

Child Maltreatment Can Be DOUBLE State Averages

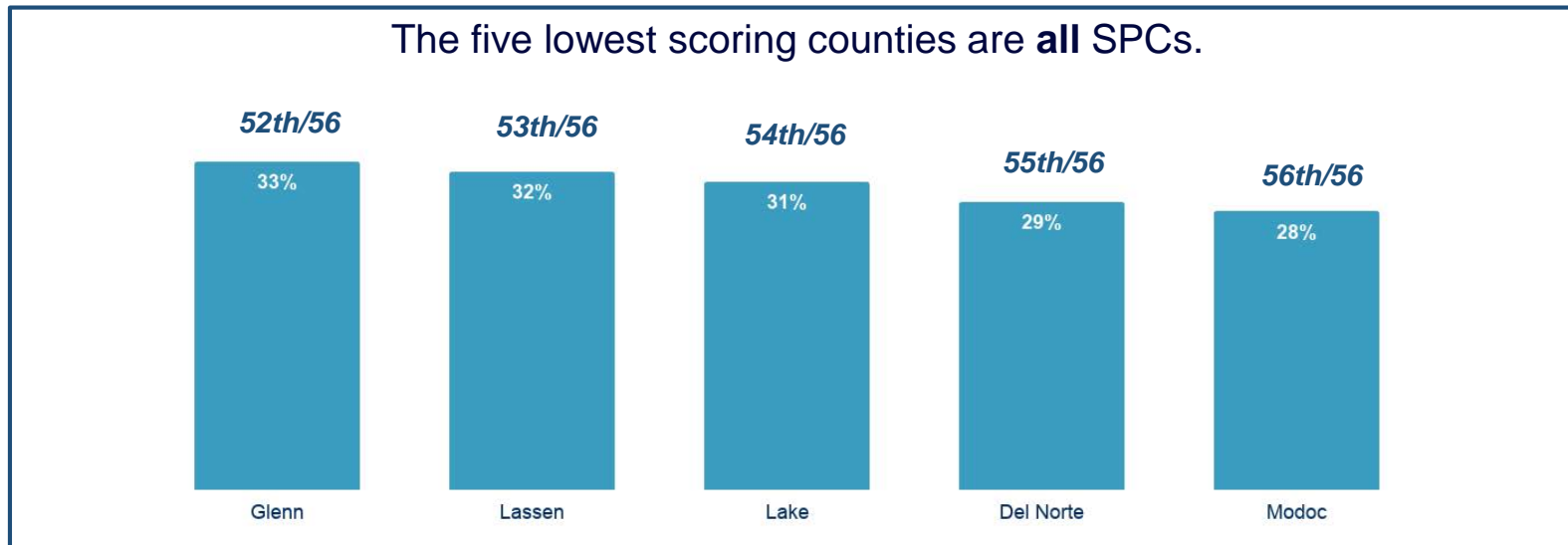
Substantiated Incidents of Child Maltreatment 2018 – CA avg. 7.6 per 1,000

- Amador 11.3
 - Calaveras 19.3*
 - Del Norte 14.3
 - Glenn 17.8*
 - Inyo 12.1
 - Lake 9.6
 - Mariposa 9.4 (2018), 19.1* (2019)
 - Modoc 20.2*
 - Mono 12
 - Plumas 24.2*
 - Siskiyou 13.7 (2018), 17.1* (2019)
 - Tehama 12.1
 - Tuolumne 16.2* (2018), 20.5* (2019)
- * indicates the rate was more than double the state average.*

Source: California Child Welfare Indicators Project, UC Berkeley

Investment in 0-5 Critical to Changing Trajectory of Future Academic Success in SPCs

Just four SPCs meet or exceed the state average (49%) for 3rd grade students at or above grade level in English and language arts.



Supporting Early Literacy through Home Library Expansion

In 2018-19, small population counties provided:



Over **83,950 books***
for home libraries



Over **18,111 children***
with at least 1 new book

“We enrolled over 200 children into the program in the first month, which far exceeded estimates. By the end of the year, we enrolled 294 children in less than six weeks. We are very excited to be offering this program, and it has been very well-received by parents and families.”

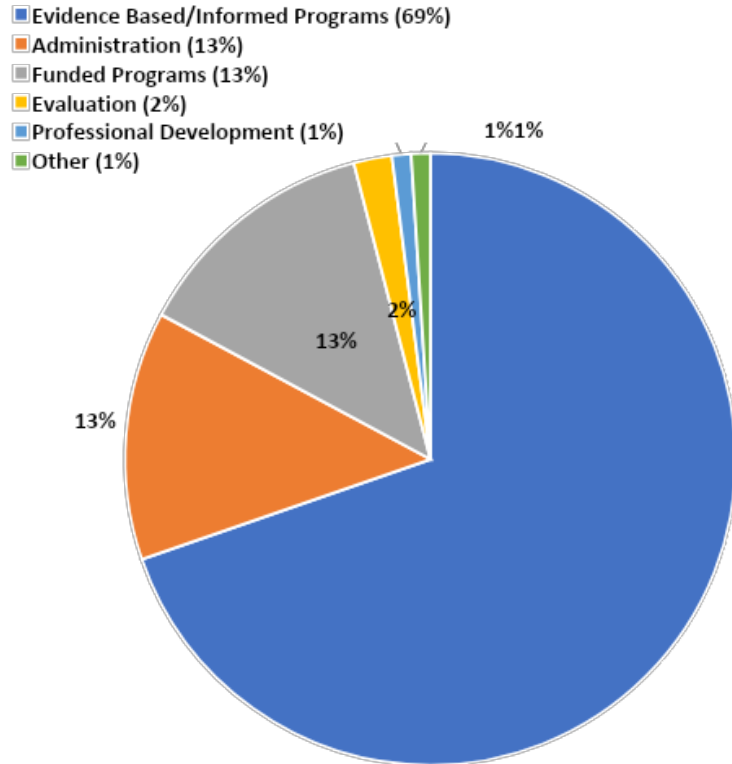
-SPC Executive Director

Reflections from Community Leaders

*“I am inspired by community and by the power of partnership. First 5 Siskiyou has fostered collaboration among community partners to bring programs, resources and expertise into our community that would never have been possible without the **vision and leadership** by First 5 Siskiyou Children and Families Commission.”*

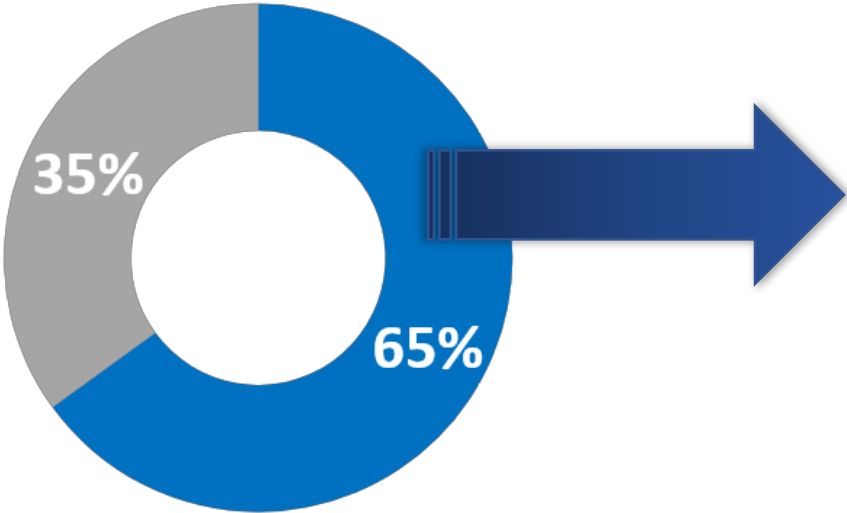
-Dr. Sarah Collard, Director of Siskiyou County Health and Human Services

How Critical Contributions from First 5 California to Small Counties are Spent



Statewide, **69% or more** of augmentation funds are spent on **evidence-based or informed programming** to support the development and well-being of young children & their families

Small Population County Workforce



■ 2 or fewer FTEs

■ More than 2 FTEs

65% of SPCs have 2 or fewer FTEs to support young children & their families countywide

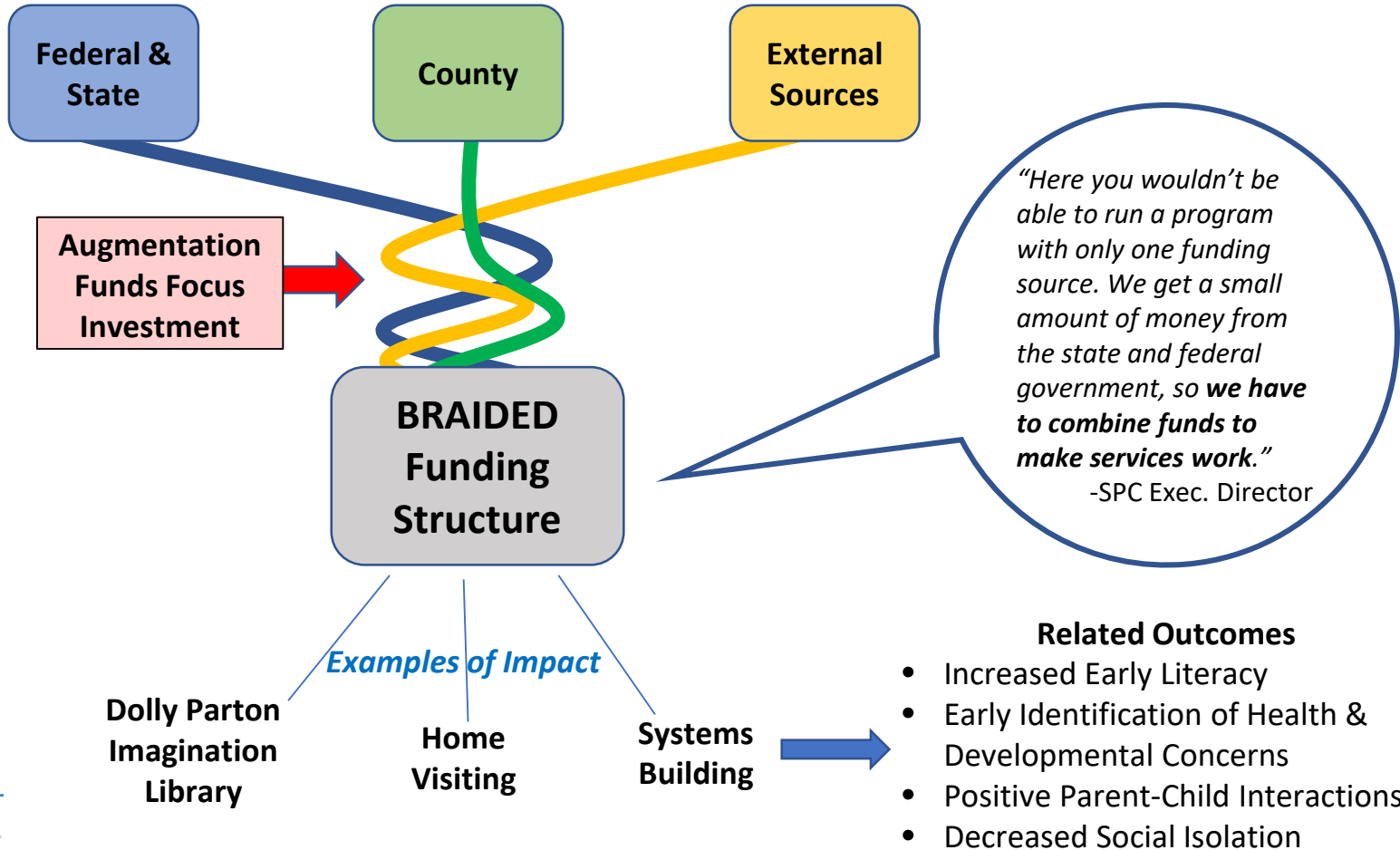
SPCFA Creates Solid Foundation for Collective Community Success

Key, recognized system leader in rural communities

Trusted, dependable partner bringing together individual organizations to achieve a shared vision

Capacity builder within the overarching system

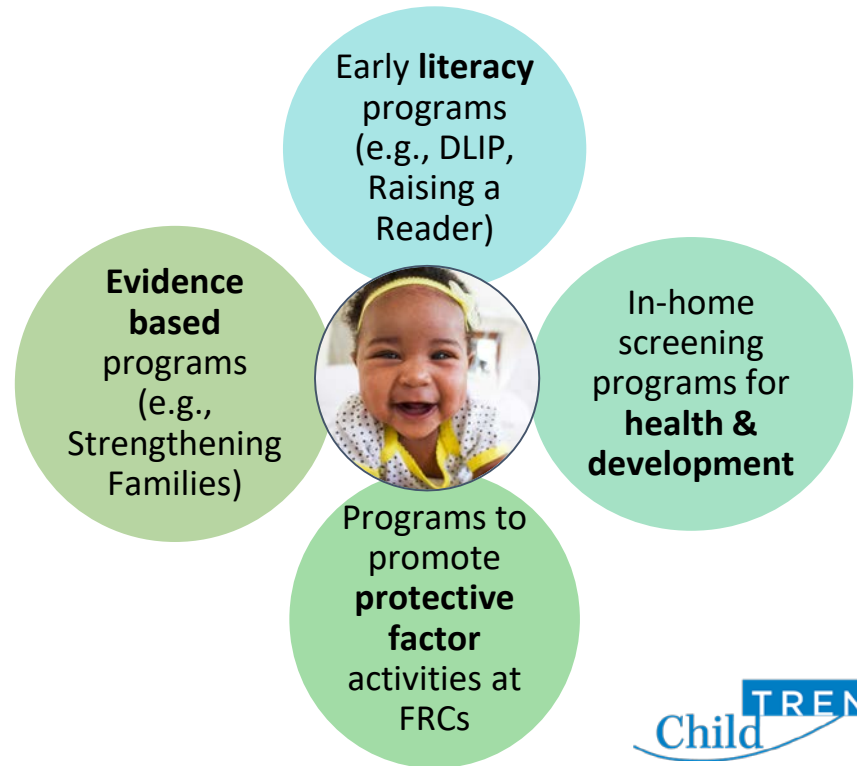
Cornerstone for collective impact, providing the basis for new opportunities, partnerships, services, and more coordinated systems



SPCFA Investments: Supporting the Framework in Small Population Counties

FULL funding for **52** early childhood programs

PARTIAL funding for **29** early childhood programs



For example...

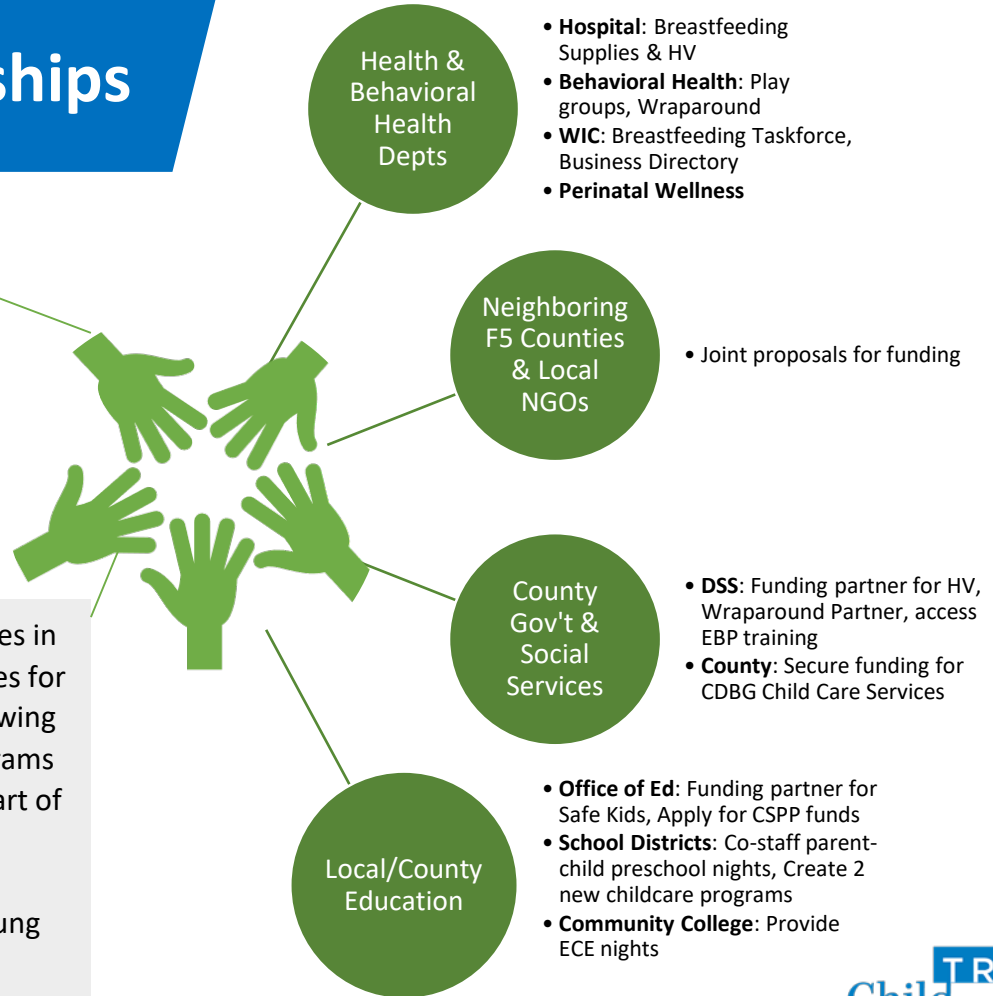
As a trusted leader & capacity builder within each community, First 5s support vital programs, lead systems building, and foster partnerships:

- Lead in systems coordination: Quality Counts, home visitation, early literacy, parenting
- Dolly Parton Imagination Library and other literacy supports
- Partners reach out for new ways of working and funding together
- Multiple funding partners including MHSA, Foundation, Office of Education, DHS, Donations, Library, etc.
- A robust menu of parenting education classes
- FRCs, which provide concrete support in time of need
- Highly successful professional development system
- First ever Kindergarten-readiness assessment

Value of Local Partnerships

“We have great data in our programs and we’re getting better. To have a collaborative where we have behavioral health, health & human services, public health, the school district, United way, non-profits – it didn’t happen in our counties, but it happens in community centers.” -SPC Exec. Director

“Our FRCs continue to provide essential services in outlying areas of the county. New opportunities for families are made available at these sites, allowing easier access. Community and children's programs utilize these community hubs, making them part of the fabric of each community. The [FRC] has bilingual staff and has become a comfortable location for Spanish-speaking families with young children.” -SPC Exec. Director



Partnership



*“First 5 Siskiyou Children and Families Commission has been an **integral partner** for our District to provide parenting education, specialized instruction around areas of concern, such as human trafficking, and support for our most at risk families. First 5 has also been integral in our Districts' Kindergarten readiness program and assessment. Their support in training our teachers, aggregating data, and producing an easy to read report has greatly improved our transition processes from preschool to kindergarten.”*

- Marie Caldwell, Superintendent Scott Valley Unified School District

Parent Perspective

“[Parents] were full of praise and appreciation for the wealth of support and help provided by their local Resource Center. There were many glowing reports of how the programs provided had saved families in times of dire need. One woman said she arrived in town with nothing and was given clothes, food, and all that she needed. She couldn’t be more grateful. Others mentioned how the playgroups had been a profound support, both for the children and for the parents themselves, in that they were able to meet other parents in similar circumstances. Many said that they made life-long friends there...the parents felt that the warm support offered by those who work at each center was an extension of family.”

– Ana Ramana, Contractor who conducted FRC interviews

SPCFA Key to Meeting the Promise of Prop 10

- Our shared, long-term commitment to ensuring all children in California have a vibrant, healthy, learning-ready future
- SPCFA provides a minimum baseline level of funding that addresses structural flaws in Prop 10
- Entire First 5 Network - First 5 California, 58 local commissions, and First 5 Association - must be strong to realize our full collective potential
- Effective and vibrant small population county First 5s are essential for child well-being locally and statewide