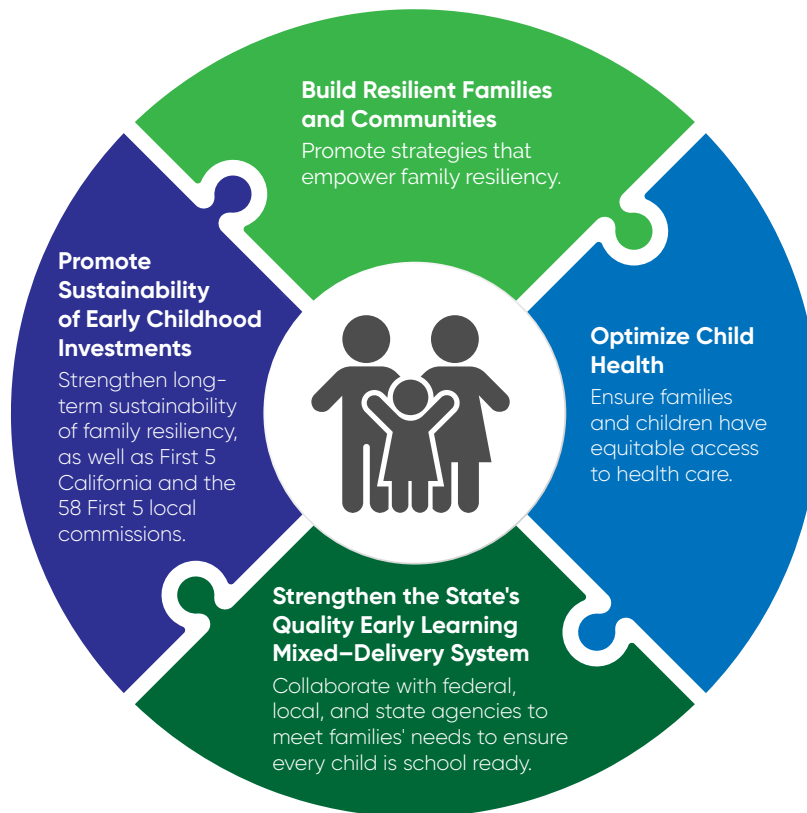




YOUNG CHILDREN'S STATE POLICY AGENDA

First 5 California annually adopts a Policy Agenda to guide and prioritize all Commission state and federal public policy and regulatory advocacy, aligned to our Strategic Plan. The four pillars ensure that we endorse and engage in public policy actions that ensure First 5 California can meet its Audacious Goal that in a generation, all children 0–5 will have the **safe, stable, nurturing relationships and environments** necessary to achieve healthy development.



First 5 California's North Star articulates our commitment to trauma-informed, healing-centered, and culturally responsive systems that promote the safe, stable, nurturing relationships and environments necessary to eliminate inequities and ensure healthy development for all children.

BUILD RESILIENT FAMILIES AND COMMUNITIES

- Support efforts to ensure economic security and financial stability for families and children through:
 - Expansion of paid family leave programs
 - Creation and continuation of tax credits and incentives
 - Elimination or reduction of fee and fine-based barriers
 - Promote universal basic income
 - Establishment of safe and fair banking and lending practices
 - Investments in stable food and housing security
- Support effective and culturally appropriate parent education and engagement programs on child development and health, early literacy, and safe, stable, nurturing relationships and environments.



- Strengthen relationships with state agencies, community-based organizations, and private sector to co-design and support family resiliency policies on whole child, whole family, and whole community.
- Address digital equity for all families to fully participate in our society and economy.

OPTIMIZE CHILD HEALTH

- Ensure that families and children have access to equitable and just health care coverage and services, that also include:
 - Adverse childhood experience screening
 - Behavioral and mental health
 - Developmental screening
 - Doula services for prenatal and postpartum care
 - Drug-related regulations and cessation programs
 - Early intervention and inclusion
 - Home visiting and community health workers
 - Intervention and preventative care
 - Nutritional programs and services
 - Population health and community health status
- Improve accessibility and eligibility policies for family and children support services through local, state, and federal agencies coordination and streamline protocols that reduce participation barriers.

STRENGTHEN THE STATE'S QUALITY EARLY LEARNING MIXED-DELIVERY SYSTEM

- Support the implementation and expansion of high-quality early learning mixed-delivery system through collaborative efforts with federal, local, and state agencies and partners to meet families' needs and ensure every child is school ready.
- Promote access to safe, high-quality early care and education programs for infants, toddlers, and children through age 5 through via statewide rate reform efforts based on equitable and professional compensation, foster diversity in the field, and provide continuous professional development.
- Address workforce capacity needs of child care providers, preschool, transitional kindergarten, and kindergarten educators and support staff through recruitment and retention initiatives, such as the development of micro-credentialing and apprenticeship programs, in partnership with community-based organizations, higher education institutions, and credentialing preparation programs.
- Support increased coordination between local, state, and federal levels, to promote health and safety policies, quality improvement systems, multilanguage learner supports, and address infrastructure capacity that meet families and children's needs.

PROMOTE SUSTAINABILITY OF EARLY CHILDHOOD INVESTMENTS

- Promote funding opportunities that support targeted universal access to whole child, whole family, whole community efforts, programs, and services.
- Advocate funding prioritization and inclusion of children, prenatal to age 5 and their families, in existing and new revenue policy proposals and tax funding structures.
- Support braiding and leveraging opportunities that provide fiscal resiliency of the First 5 Network, which includes the First 5 California State Commission, the First 5 Association, and the First 5 county commissions in each of California's 58 counties to ensure every family and child has access to critical prenatal through age 5 services and programs.

*First 5 California will use targeted universalism approach to achieve its policy goals.